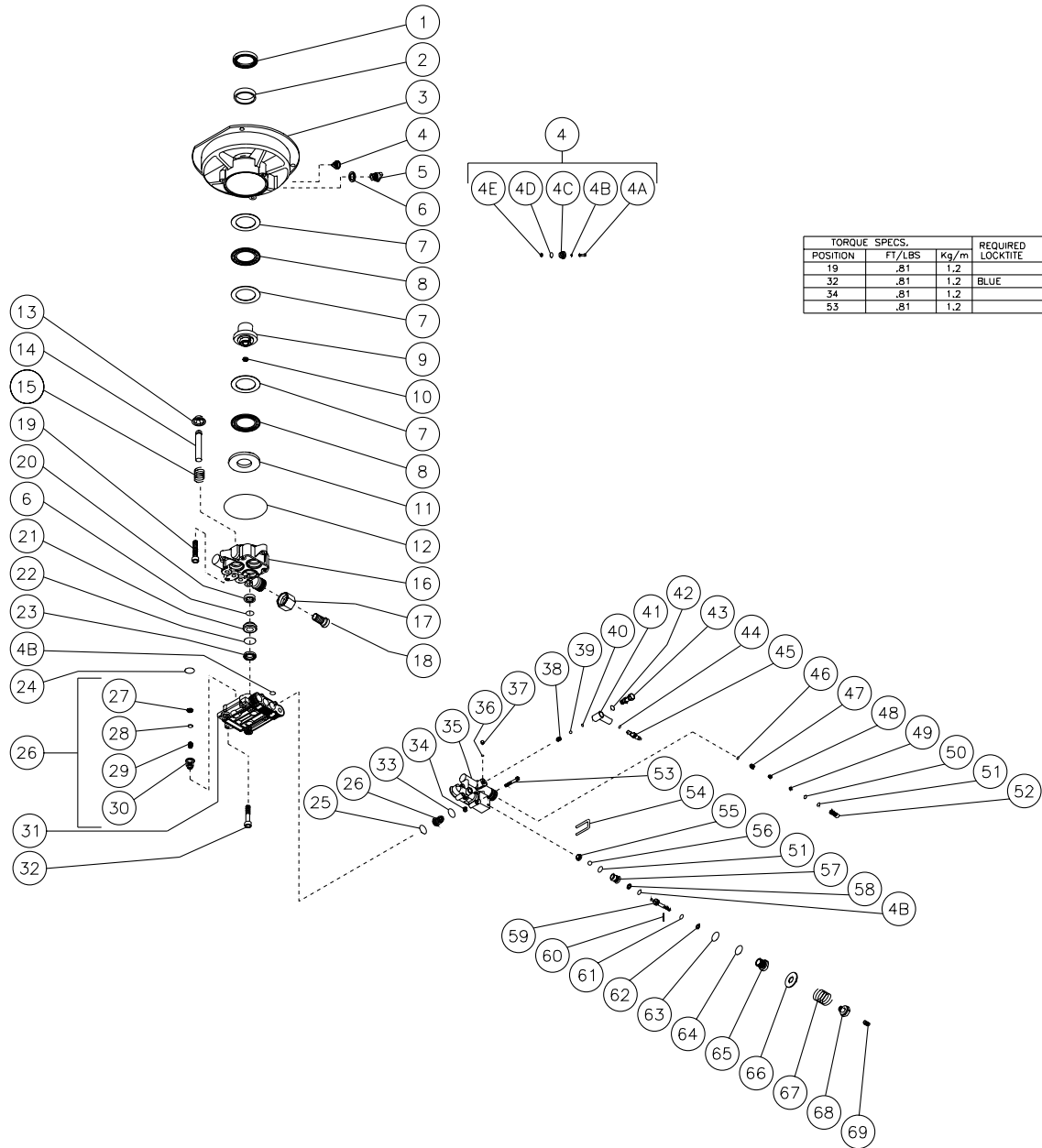


PUMP ASSEMBLY (3-0151)



POSITION	TORQUE SPECS.		REQUIRED LOCKTITE
	FT/LBS	Kg/m	
19	.81	1.2	
32	.81	1.2	BLUE
34	.81	1.2	
53	.81	1.2	

OMPMP042-110797-DCE

PUMP ASSEMBLY (3-0151)											
REF #	DESCRIPTION	Mi-T-M #	QTY	REF #	DESCRIPTION	Mi-T-M #	QTY	REF #	DESCRIPTION	Mi-T-M #	QTY
1	Oil Seal (See 70-0189)	N/A Sep.	1	24	O-ring	25-0359	3	52	Injector Body	46-0360	1
2	Bushing (See 70-0189)	N/A Sep.	1	25	O-ring	25-0360	3	53	Bolt	27-8893	4
3	Flange (See 70-0189)	N/A Sep.	1	26	Valve Complete (See 70-0191, Inc. 24-26)	N/A Sep.	6	54	U-Clip	46-0741	1
4	Oil Vent Assembly (4A-4E)	22-0223	1	27	Valve Seat	N/A Sep.	6	55	Valve Seat Plate	46-0686	1
4A	Oil Vent	N/A Sep.	1	28	Valve Plate	N/A Sep.	6	56	Ball	46-0685	1
4B	O-ring	25-0230	3	29	Valve Spring	N/A Sep.	6	57	Unloader Seat	46-0352	1
4C	Oil Vent	N/A Sep.	1	30	Valve Cage-Plastic	N/A Sep.	6	58	Backup Ring	25-0247	1
4D	O-ring	N/A Sep.	1	31	Pump Head	46-0739	1	59	Piston Bypass Valve (See 70-0193)	N/A Sep.	1
4E	Oil Vent-Spring	N/A Sep.	1	32	Bolt	27-8892	5	60	Roll Pin	46-0364	1
5	Oil Sight Glass-Plastic	46-0735	1	33	O-ring	25-0361	4	61	O-ring	25-0242	1
6	O-ring	25-0255	4	34	Plug	27-8868	1	62	Backup Ring	25-0246	1
7	Thrust Washer	48-0056	3	35	Pump Manifold	46-0740	1	63	O-ring	25-0231	1
8	Thrust Needle Roller Bearing	48-0057	2	36	O-ring	25-0357	1	64	O-ring	25-0263	1
9	Wobble Plate - 7.5	46-0662	1	37	Bolt	27-8894	1	65	Body Bypass Valve	8-0470	1
10	Plug	39-0082	1	38	Detergent Injector Spring (See 70-0102)	N/A Sep.	1	66	Washer	28-0295	1
11	Thrust Washer	48-0064	1	39	Detergent Injector Ball (See 70-0102)	N/A Sep.	1	67	Pressure Regulating Spring - 2000 PSI	49-0131	1
12	O-ring	25-0358	1	40	O-ring (See 70-0102)	N/A Sep.	1	68	Pressure Regulating Nut	8-0471	1
13	Retainer	46-0663	3	41	Detergent Injector Adapter	46-0636	1		Flange Assembly (Includes 1-3)	70-0189	
14	Piston-Stainless Steel	46-0664	3	42	O-ring (See 70-0102)	N/A Sep.	1		Piston Assembly (Includes 13-14)	70-0190	
15	Spring	49-0129	3	43	Banjo Fitting	46-0637	1		Packing Kit (Includes 3 each 22, 23)	70-0195	
16	Pump Housing	46-0736	1	44	O-ring	25-0341	1		Valve Kit (Includes 24-26)	70-0191	
17	Garden Hose Connection	23-0304	1	45	Hose Barb - Detergent Injector	46-0638	1		Injector Repair Kit (Inc. 38-40, 42)	70-0102	
18	Garden Hose Adapter	23-0305	1	46	O-ring	25-0334	1		Unloader Check Valve Kit (Inc. 46-52)	70-0108	
19	Bolt	27-8404	3	47	Check Valve	22-0158	1		Unloader Seat Kit (Includes 51, 55-57)	70-0192	
20	Oil Seal	26-0195	3	48	Spring - Check Valve	49-0130	1		Unloader Stem Kit (Inc. 4B, 58-68)	70-0193	
21	Retainer	46-0737	3	49	Injector Nozzle	46-0356	1		Manifold Assy. (Inc. 4B, 34-43, 46-68)	70-0194	
22	O-ring (See 70-0195)	N/A Sep.	3	50	O-ring	25-0362	1				
23	Pressure Seal (See 70-0195)	N/A Sep.	3	51	O-ring	25-0248	2				